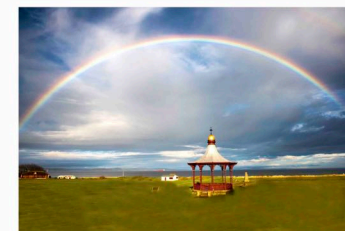


#TeamHamish

V I S I O N F O R N A I R N



Company Number: SC388110
Registered Charity Number: SC042118



teamhamish.org



#TeamHamish

VISION FOR NAIRN

BACKGROUND

#TeamHamish was established in May 2017 following the death of our son on February 20th. Our Mission Statement was two fold, firstly, the creation of special Community places, spaces and facilities for all ages and abilities to enjoy - we felt this would be an appropriate 'Thank you' to the Community of Nairn for their continued support throughout Hamish's illness. Secondly, as a lasting legacy in Hamish's memory. It soon became evident from the way that our ideas for #TeamHamish were adopted by the Community that this had the potential scale to act as a catalyst for the regeneration and revitalisation of Nairn in a wider context. Our initial conceptual ideas and principles were taken from personal experience or recommendations that had been suggested to us - spaces, places and installations that we thought would work really well in Nairn. Whilst our conceptual masterplan covered a broader holistic approach to Nairn's revitalisation, our focus was on the Links area of the town. With our proposal to utilise the Common Good Land, one of our driving principles is that any intervention must be sensitively integrated into the existing topography as an enhancement to its natural context.

KEY OBJECTIVES

- The regeneration of Nairn as a tourist destination;
- Revitalisation of Nairn for the benefit of its Community;
- Generate more economic activity by increasing the visitor footfall;
- Sensitivity and respect to retain Nairn's beautiful, natural assets;
- Maintained and sustainable.

PROPOSALS

The strategic premise of these proposals is based on a widely recognised circular tourist route encompassing Nairn's primary features. Whilst access points to this circular tourist route are, of course, flexible, the logical starting point for a visitor to Nairn would be the town centre car park. This point is readily available from the A96, the primary artery through Nairn, and gives direct access to the High Street, but most importantly a pedestrian promenade link to Viewfield House.

We would like to see Viewfield House revitalised to incorporate an upgraded museum, tourist information centre, quality toilets, flexible exhibition spaces, perhaps a small cinema / theatre and a café that can take advantage of its beautiful setting in Viewfield. This would offer a different 'parkland' experience to that of the seaside / Links, and a visitor attraction for inclement weather.

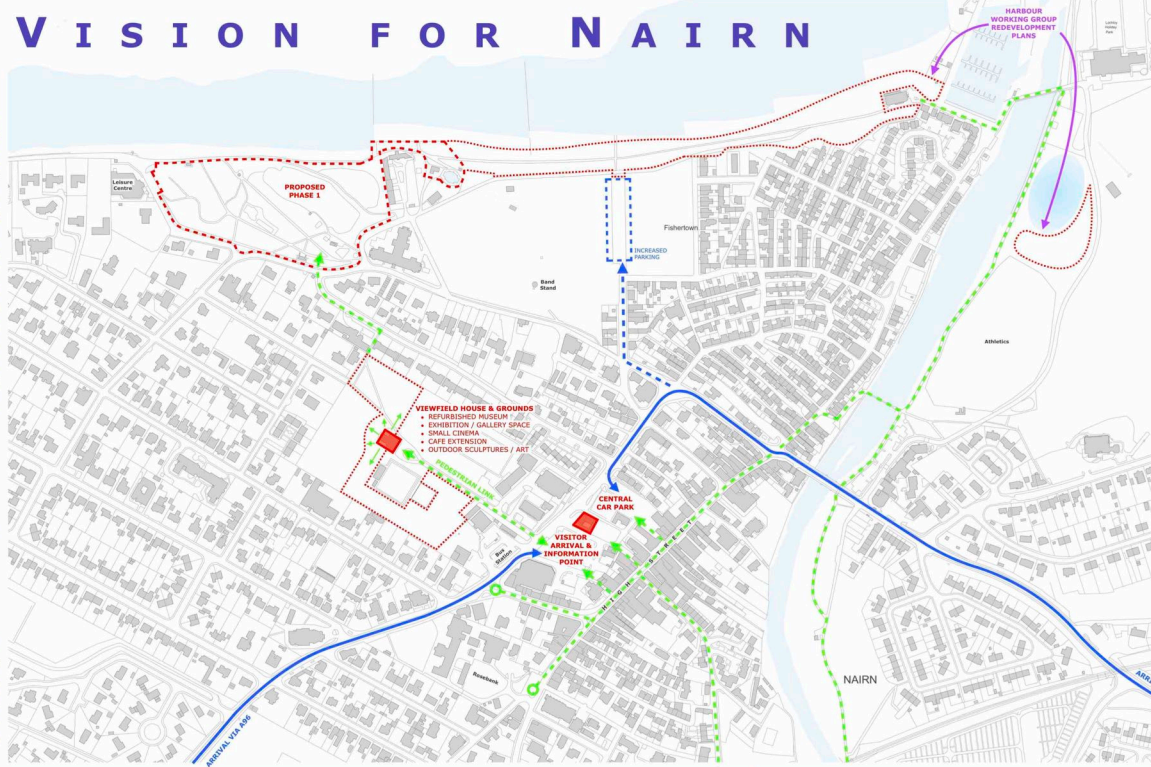
The journey from Viewfield to the seafont is just a few minutes; and it is this area of the Links, between the Leisure Centre and paddling pool, that would be the initial focus of our proposals.

Our principle concept is to enhance the existing natural topography with the formation of enjoyable spaces and places that appeal to the broad demographic of Nairn and its visitors. This would see the inclusion of areas for a wide spectrum of activities; from fun, colourful spaces to places that offer quiet contemplation; through to areas that can be multifunctional, educational and even inspirational. Our interventions will be accessible and offer all year round use.

The continuation of our journey around Nairn leads along the beautiful seafont to the harbour, around the riverside path and back into the town centre and High Street.

COMMUNITY

We believe that this is a Community project. Throughout the last year and a half we have been truly overwhelmed and astounded by the level of support that has been shown to #TeamHamish and we are reliant on the support of Nairn's Community for the ongoing momentum of the incredible fundraising achievements. Additionally, we wish to entrust elements of the proposals to a wide variety of Community Groups within the town for both its design and execution.



- | | | |
|--|--|---|
| 1 Rainbow 'beach huts' - James's Ice Cream, kitchen, workshop, putting kiosk, studios, shelter | 8 Viewing shelter | 15 Paths - suitably illuminated, themed directional signage, accessible |
| 2 Main social gathering space - bespoke fixed seating, tables, shelter | 9 Shelter | 16 Bespoke seating and tables adjacent to improved beach access |
| 3 Amphitheatre - terraced seating, multipurpose events space, sheltered / partially covered | 10 Spaces and places to discover - sculptures, water features, art, follies, quiet, contemplative, interactive | 17 Refurbished and extended Links Tearoom |
| 4 Existing natural wooded area | 11 Refurbished chess / draughts board | 18 'Splash Pad' for use all year round - warmed water, sheltered / partially covered, accessible |
| 5 Rainbow themed crazy golf | 12 Rainbow arch 'Gateway' | 19 Upgraded and extended Play Park - multi-age, multi-ability, all weather, sheltered / partially covered |
| 6 Putting Green | 13 Public Toilets | 20 Primary Access Points |
| 7 Adventure play area - natural environment, timber construction, accessible equipment | 14 Keeping Nairnshire Colourful orienteering flowerbed | * Proposed 'Demonstration' Projects |

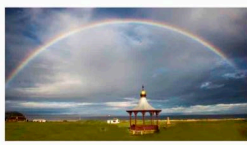
- Fun**
- Accessible and inclusive**
- Play**
- Working with the Community
- Enhancement of existing natural assets
- Harnessing social capital
- Destination**
- Holistic approach for all areas
- A cohesive journey
- Concept Principles**
- For all ages and abilities
- Maintained and sustainable for future generations to enjoy
- Local artists & sculptors
- Respect for existing trees
- Incorporation of local businesses
- Catalyst**
- All year round use

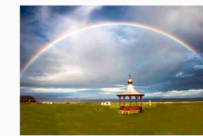


- Concept Ideas**
- Sculpture
- Quiet and contemplative spaces
- Creative Landscaping
- Access to beach
- Water features
- Seating and tables**
- Viewing platforms
- Interactive Pieces
- Adventure trail
- A connection of follies
- Play areas
- Outdoor musical instruments
- Shelters and undercover areas
- Water heated by renewable sources
- Events areas
- Golf
- Art installations
- Water park**



Initial Concept Sketch





Hamish's Journey

Hamish Hey was first diagnosed in June 2011 with a metastatic alveolar rhabdomyosarcoma - a rare and aggressive soft tissue cancer.

At just 2 years old, Hamish underwent 14 months of gruelling treatment, intensive chemotherapy and radiotherapy, together with a pioneering surgery called rotationplasty, resulting in him having to be fitted with a prosthetic limb.

During the following few years Hamish miraculously fought on, living life as best a little boy should, but with regular checkups and extensive routine medication, primarily to control the longterm side effects of the treatment.

Then tragically, in March 2016, now aged 7, Hamish was diagnosed with a DIPG - an aggressive, inoperable tumour within the brainstem, for which there is no cure. This diagnosis was completely unrelated to that in 2011.

Hamish underwent 30 sessions of radiotherapy, but this treatment was only palliative to allow him a little more time with his loving family and friends.

Hamish passed away peacefully in his mother's arms at home on the 20th February 2017.

Hamish's Legacy

#TeamHamish will create something positive and exciting for Nairn.

Throughout Hamish's illness, we have been truly overwhelmed by the love and support that we have received from so many over the years, particularly from the Community of Nairn.

We now feel that it is time to thank the People of our town.

Our plan is to create special family spaces; places and areas for all ages and abilities to experience and enjoy. In doing this we will radiate the love that we hold for Hamish.

Our wish is to ensure that Hamish's memory lives on in this legacy for future generations in many years to come.

NICE Nairn

To bring our ideas to fruition and ensure ongoing maintenance, #TeamHamish have affiliated with the Nairn Improvement Community Enterprise. Having been appointed Directors of NICE, we can draw on their wealth of experience and work within the Community to develop our proposals.

Under the umbrella of NICE, as a Registered Scottish Charity, this opens up potential avenues for funding, grants and Gift Aid.



Fun

Accessible and inclusive

Play

Working with the Community

Enhancement of existing natural assets

Harnessing social capital

Destination

Holistic approach for all areas

Sensitive integration with existing features and natural topography

A cohesive journey

Concept Principles

For all ages and abilities

Maintained and sustainable for future generations to enjoy

Respect for existing trees

Local artists & sculptors

Incorporation of local businesses

Catalyst

All year round use

Sculpture

Quiet and contemplative spaces

Creative Landscaping

Access to beach

Water features

Seating and tables

Interactive Pieces

Viewing platforms

Concept Ideas

Outdoor musical instruments

A connection of follies

Play areas

Adventure trail

An interactive trail of walks & paths

Shelters and undercover areas

Water heated by renewable sources

Events areas

Golf

Art installations

Water park



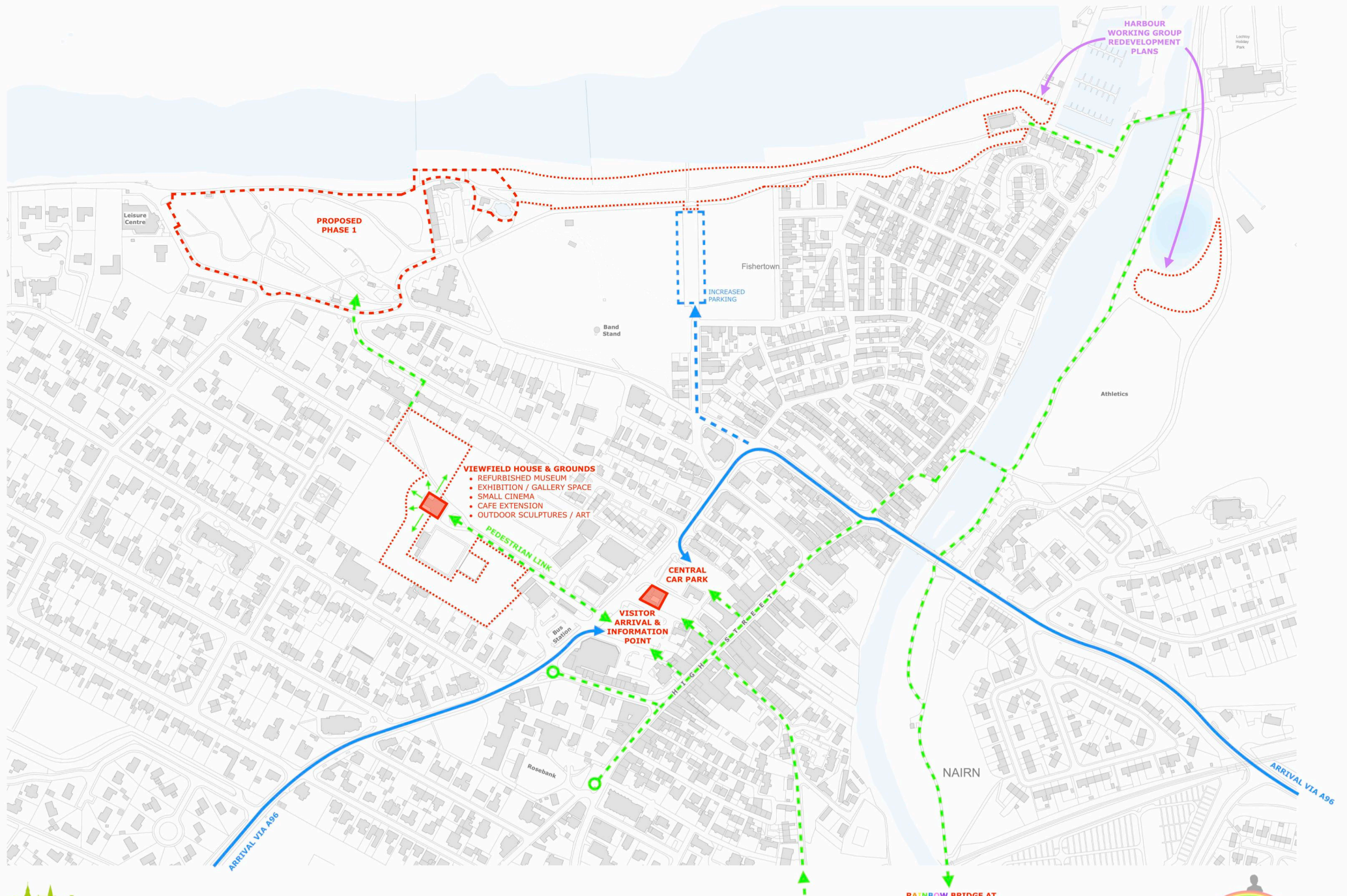
Company Number: SC388110
Registered Charity Number: SC042118



teamhamish.org



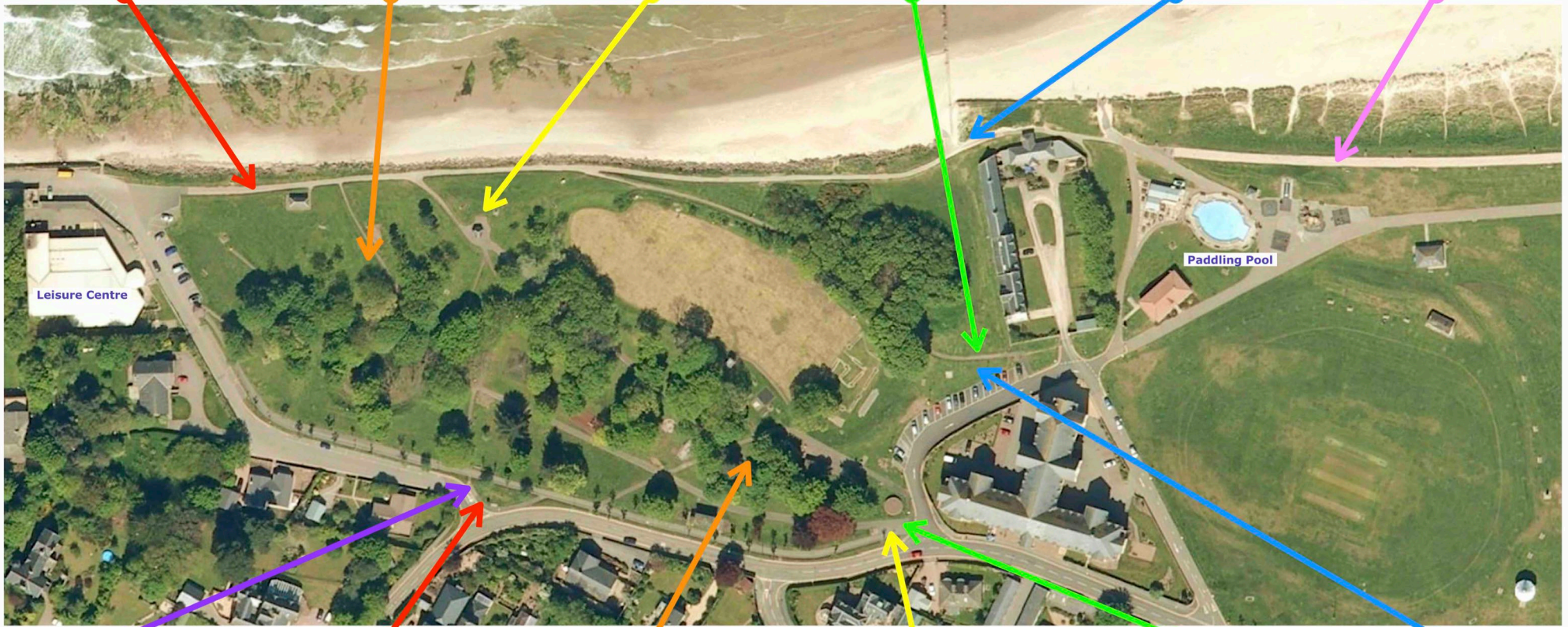
Nairn Strategic Masterplan



Company Number: SC388110
Registered Charity Number: SC042118

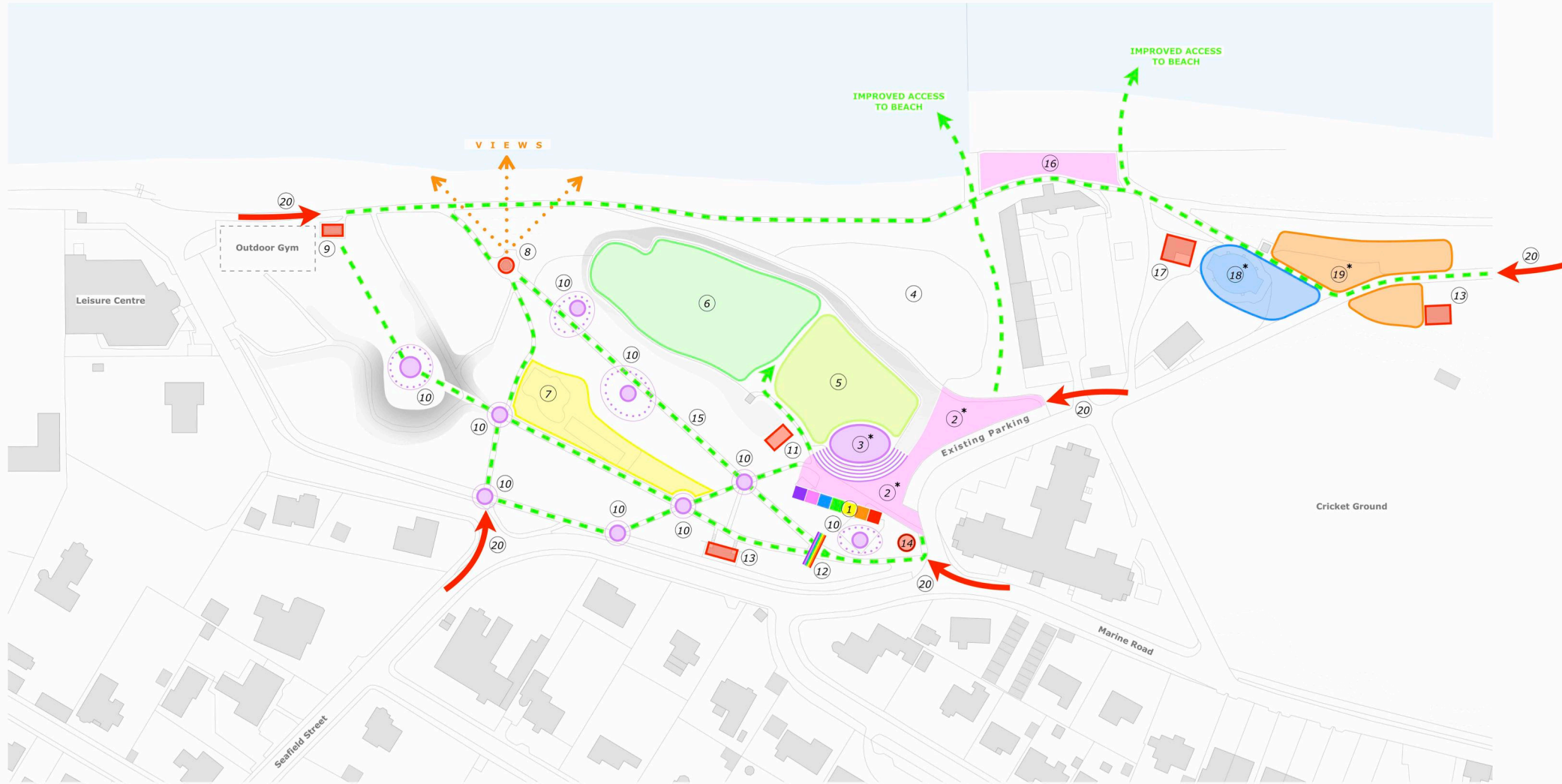


Phase 1 Existing Environment



Phase 1 Concept Proposals Masterplan

Revision A - Updated Following Feedback Comments From June Open Public Presentation



- ① Rainbow 'beach huts' - James's Ice Cream, kitchen, workshop, putting kiosk, studios, shelter
- ②* Main social gathering space - bespoke fixed seating, tables, shelter
- ③* Amphitheatre - terraced seating, multipurpose events space, sheltered / partially covered
- ④ Existing natural wooded area
- ⑤ Rainbow themed crazy golf
- ⑥ Putting Green
- ⑦ Adventure play area - natural environment, timber construction, accessible equipment

- ⑧ Viewing shelter
- ⑨ Shelter
- ⑩ Spaces and places to discover - sculptures, water features, art, follies, quiet, contemplative, interactive
- ⑪ Refurbished chess / draughts board
- ⑫ Rainbow arch 'Gateway'
- ⑬ Public Toilets
- ⑭ Keeping Nairnshire Colourful orienteering flowerbed

- ⑮ Paths - suitably illuminated, themed directional signage, accessible
- ⑯ Bespoke seating and tables adjacent to improved beach access
- ⑰ Refurbished and extended Links Tearoom
- ⑱* 'Splash Pad' for use all year round - warmed water, sheltered / partially covered, accessible
- ⑲* Upgraded and extended Play Park - multi-age, multi-ability, all weather, sheltered / partially covered
- ⑳ Primary Access Points →
- * Proposed 'Demonstration' Projects

#TeamHamish

VISION FOR NAIRN
PHASE 1 PROPOSALS



Company Number: SC388110
Registered Charity Number: SC042118



teamhamish.org



Inspirational Precedents

1 **Rainbow 'beach huts'** - James's Ice Cream, kitchen, workshop, putting kiosk, studios, shelter



Scarborough



Scarborough

2 **Main social space** - fixed seating, tables, shelter



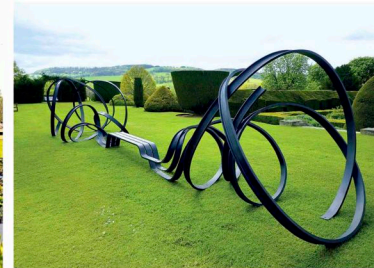
Parc Guell, Barcelona



Kiev, Ukraine



Esperance Waterfront, Western Australia



Huge Sudeley Bench, Pablo Reinoso



Portrack House



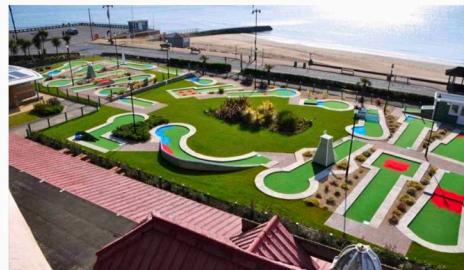
Santa Barbara, CA

3 **Terraced Seating**



Louisville Waterfront, KY

5 **Rainbow themed crazy golf**



Shanklin Seafront, Isle of Wight

6 **Pitch 'n' putt**



Rupert Park, Vancouver

4 **Play area suited to younger children** - accessible equipment



Raduga Park, Moscow



Outdoor Musical Instruments



Squaw Valley Park, Pittsburgh, PA



Watkins Regional Park, Maryland

Inspirational Precedents

7 Adventure play area suited to older children - accessible equipment



Wulaba Park, Sydney



Stanwick Lakes, Wellingborough



Dalkeith Country Park



The Blue Whale, Gothenburg

8 Viewing shelter



Esperance Waterfront, Western Australia

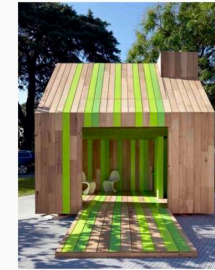
9 Shelter



Cubby House, Nixon Tulloch Fortey



Upturned Boat Seat



Cubby House, Nixon Tulloch Fortey



Sir Harold Hillier Gardens, Hampshire

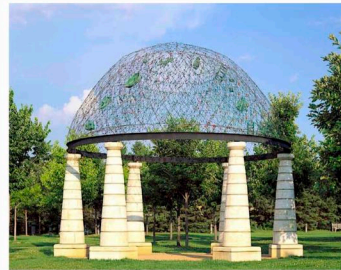
10 Spaces and places to discover - sculpture, water features, art, follies, quiet, contemplative spaces



Vogrie Country Park, Edinburgh



Shoreham, Louise V Durham



Garden Folly



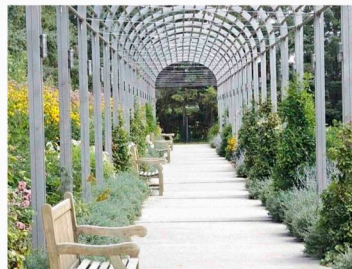
San Francisco



Jupiter Artland



Lost Gardens of Heligan, Cornwall



Garden Arcade



Througham Court Garden, Gloucestershire



Corten Steel Rain Curtain



Jardin des Plantes, Nantes

Inspirational Precedents

11 Rainbow bridge



Jupiter Artland



Garden of Cosmic Speculation, Portrack House

12 Rainbow arch



Church Square, Cape Town

15 New paths - suitably illuminated, themed directional signage



Resin bound gravel with stainless steel edge formers

13 Toilets

14 Keeping Nairnshire Colourful orienteering flowerbed

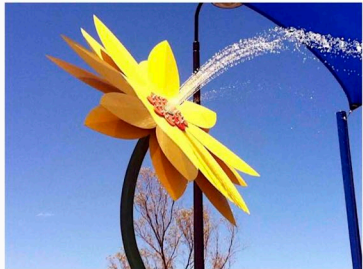
16 Potential area for additional parking at peak times

17 New trees planted to create shelter and privacy for Marine Cottages

18 Seating and tables adjacent to new beach access

19 Refurbished and extended Links Tearoom

20 Water play park for use all year round - warmed water, sheltered / partially covered



Yalgoo Water Park, Western Australia



Victoria Park, Cardiff



Parc Citroen, Paris



Victoria Park, Cardiff



Alnwick Castle Gardens



SM Seaside City Cebu, Philippines



City of Gresham, Oregon

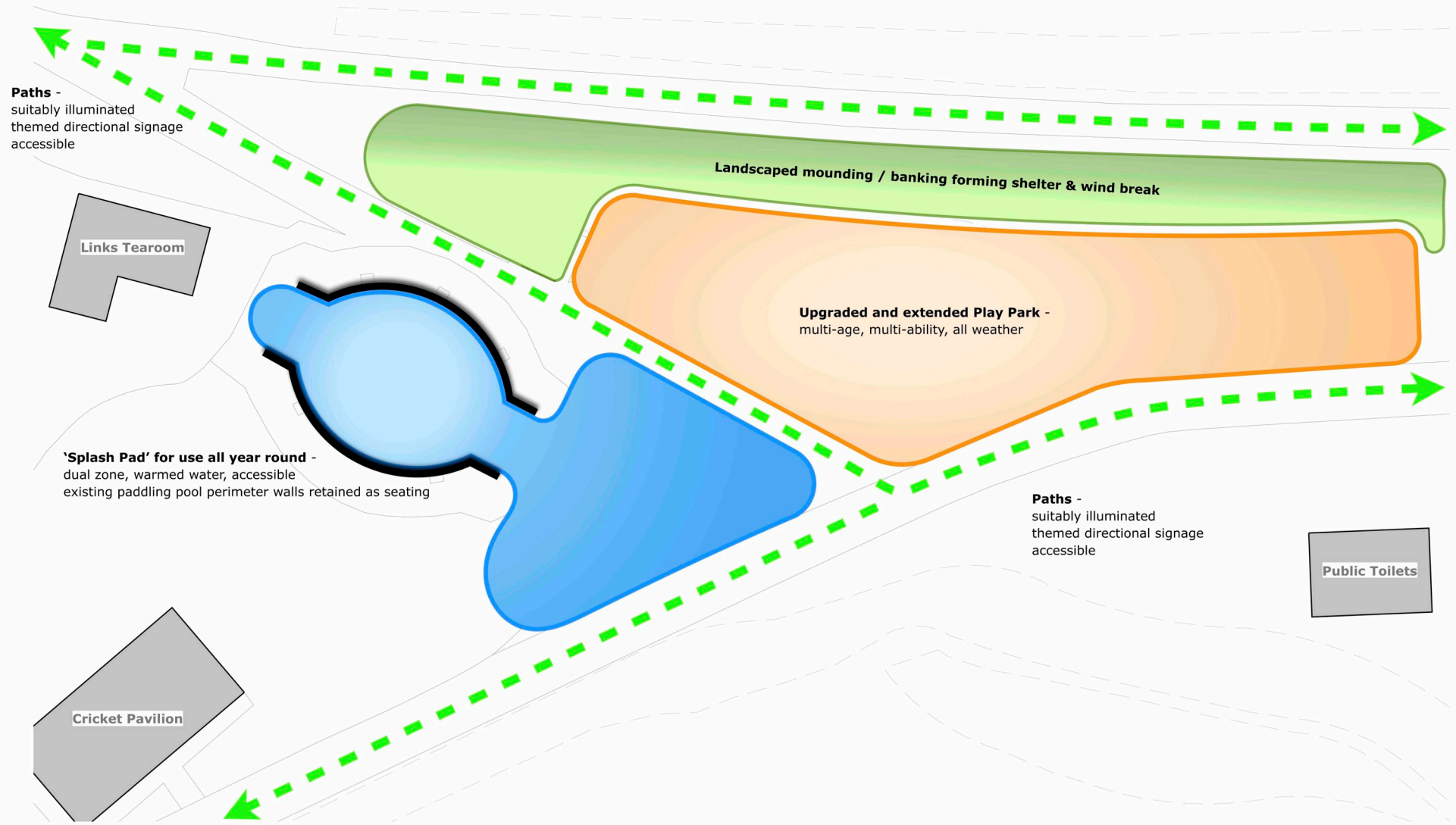


Changi City Point, Singapore

1a - Splash Pad + Play Park

Proposed Conceptual Zoning + Approach

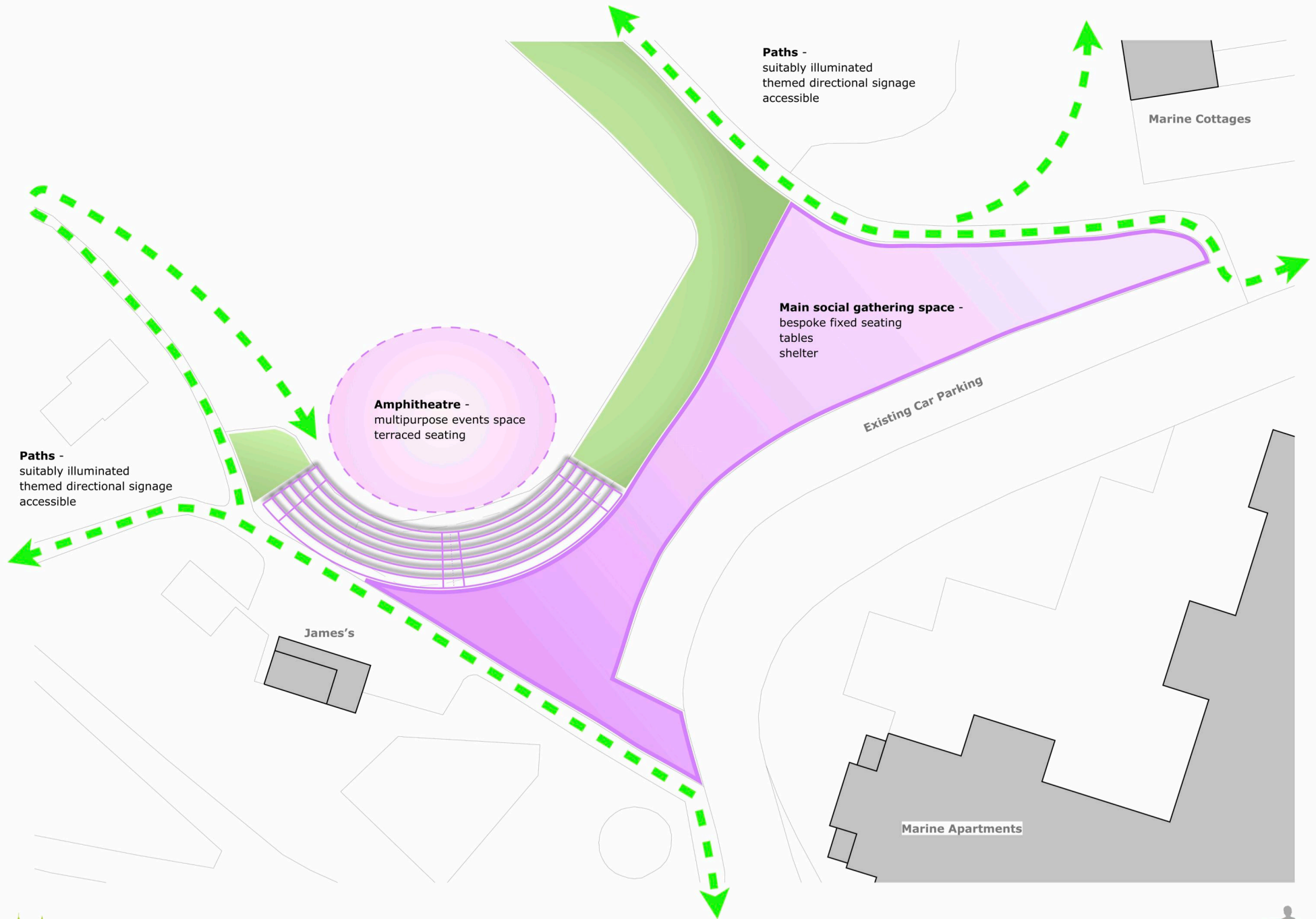
#TeamHamish



1b - Amphitheatre + Social Gathering Space

Proposed Conceptual Zoning + Approach

#TeamHamish

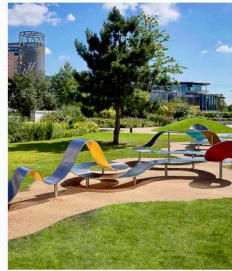


Precedents for Proposed Demonstration Projects - Phase 1

2 Main social gathering space - bespoke fixed seating, tables, shelter



La Arcada Courtyard, Santa Barbara, California



Steel Ribbon Bench, Manchester



Metal 'Butterfly' Bench



Metal 'Nest' Bench



Seaside Cast Stone Bench by Urbastyle

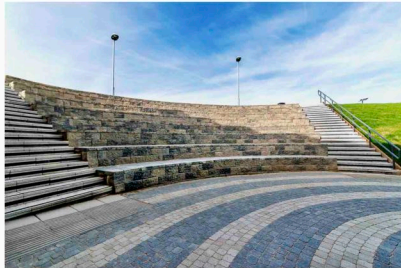


Santa Barbara, California



Esperance Waterfront, Western Australia by HASSELL

3 Amphitheatre - terraced seating, multipurpose events space, sheltered / partially covered



Denbigh School, Milton Keynes



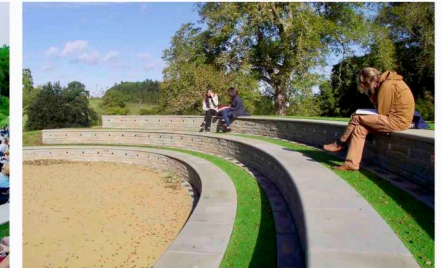
Jackson-Triggs Estate Amphitheatre, Niagara, Canada



Proposed Amphitheatre, Bath Spa University



Jackson-Triggs Estate Amphitheatre, Niagara, Canada



Bath Spa University Amphitheatre

18 'Splash Pad' for use all year round - warmed water, sheltered / partially covered, accessible



Drusillas Park, Alfriston, East Sussex



Victoria Park, Cardiff



Filmore Thomas Park, Macon, Georgia



Willen Lake, Milton Keynes



Victoria Park, Cardiff

19 Upgraded and extended Play Park - multi-age, multi-ability, all weather, sheltered / partially covered



Mission Dolores Park, San Francisco



Robertson Park, Renfrew, Paisley



Le Mee Sur Seine, France



Organic Robinia 'The Village'



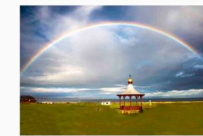
Kompan Octa Net, Sky Cabin, Tunnel Slide



Kompan Organic Robinia Explorer Ship

#TeamHamish

VISION FOR NAIRN COMMUNITY FUND - RAISING



Company Number: SC388110
Registered Charity Number: SC042118

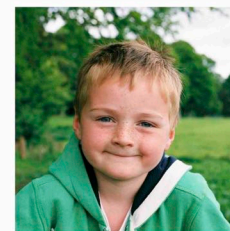


teamhamish.org



#TeamHamish

V I S I O N F O R N A I R N



THANK YOU



Company Number: SC388110
Registered Charity Number: SC042118



teamhamish.org

