

#TeamHamish

V I S I O N F O R N A I R N

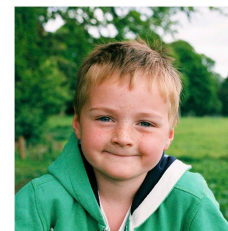
PROPOSALS DEVELOPMENT & DEMONSTRATION PROJECTS

This presentation has been prepared to illustrate the development of our ideas and proposals within Phase 1 of our 'Vision For Nairn'.

In developing our Conceptual Masterplan, we have endeavoured to incorporate all of the considered and constructive feedback and comments that we received following our Open Public Meeting on the 20 June 2018.

We also illustrate in this presentation a series of precedents for potential 'demonstration' projects which were specifically highlighted as being priorities within the feedback that we have received.

We would propose these individual elements as forming the initial stages of the holistic framework masterplan for the wider Links area.



Company Number: SC388110
Registered Charity Number: SC042118

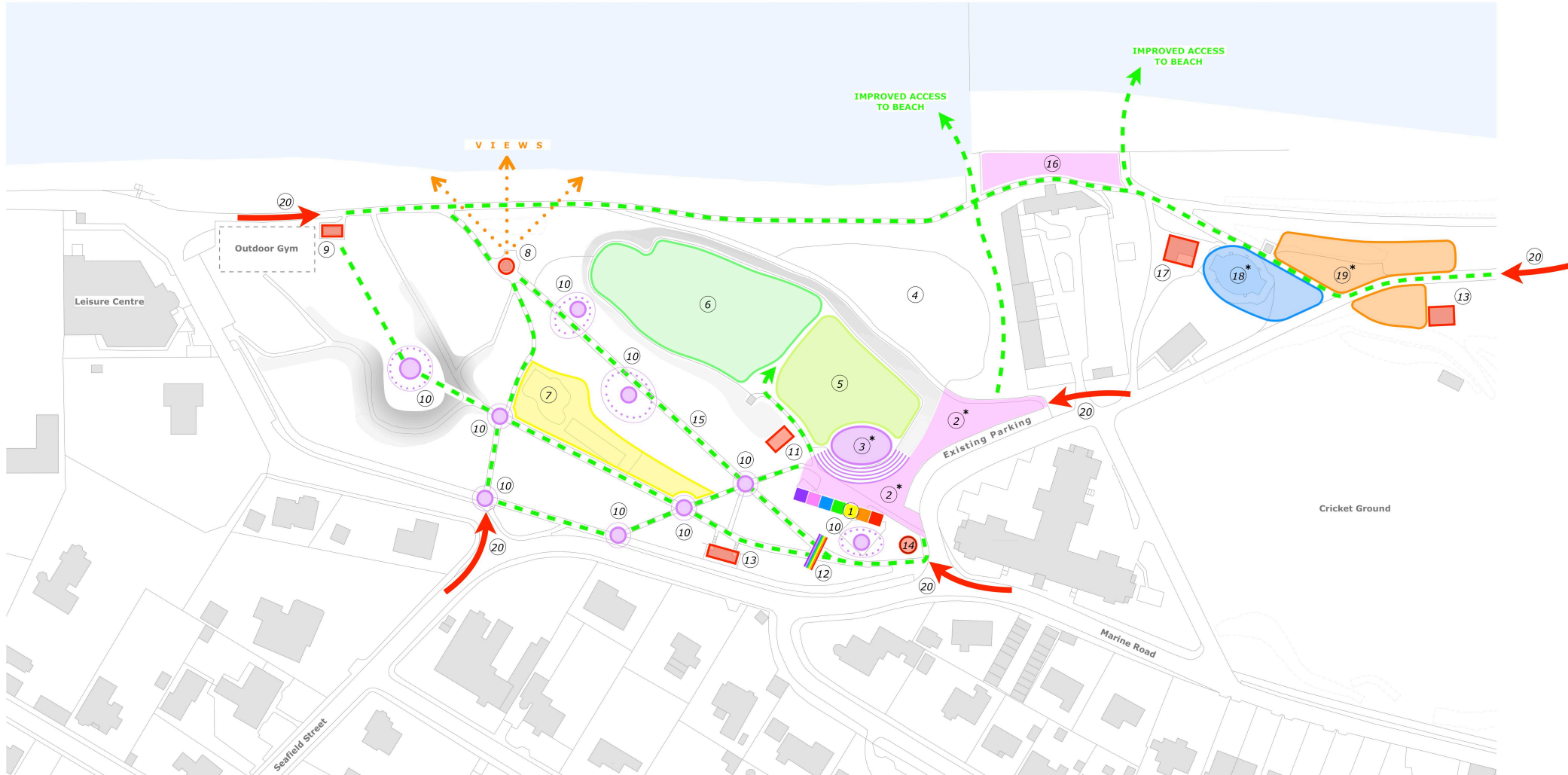


[teamhamish.org](https://www.teamhamish.org)



Phase 1 Concept Proposals Masterplan

Revision A - Updated Following Feedback Comments From June Open Public Presentation



- 1 Rainbow 'beach huts' - James's Ice Cream, kitchen, workshop, putting kiosk, studios, shelter
- 2* Main social gathering space - bespoke fixed seating, tables, shelter
- 3* Amphitheatre - terraced seating, multipurpose events space, sheltered / partially covered
- 4 Existing natural wooded area
- 5 Rainbow themed crazy golf
- 6 Putting Green
- 7 Adventure play area - natural environment, timber construction, accessible equipment

- 8 Viewing shelter
- 9 Shelter
- 10 Spaces and places to discover - sculptures, water features, art, follies, quiet, contemplative, interactive
- 11 Refurbished chess / draughts board
- 12 Rainbow arch 'Gateway'
- 13 Public Toilets
- 14 Keeping Nairnshire Colourful orienteering flowerbed

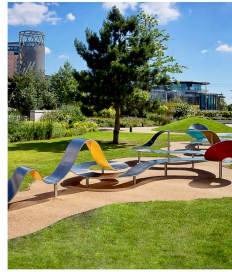
- 15 Paths - suitably illuminated, themed directional signage, accessible
 - 16 Bespoke seating and tables adjacent to improved beach access
 - 17 Refurbished and extended Links Tearoom
 - 18* 'Splash Pad' for use all year round - warmed water, sheltered / partially covered, accessible
 - 19* Upgraded and extended Play Park - multi-age, multi-ability, all weather, sheltered / partially covered
 - 20 Primary Access Points
- * Proposed 'Demonstration' Projects

Precedents for Proposed Demonstration Projects - Phase 1

2 Main social gathering space - bespoke fixed seating, tables, shelter



La Arcada Courtyard, Santa Barbara, California



Steel Ribbon Bench, Manchester



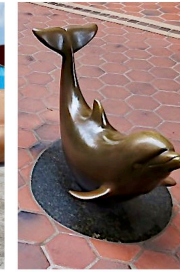
Metal 'Butterfly' Bench



Metal 'Nest' Bench



Seaside Cast Stone Bench by Urbastyle

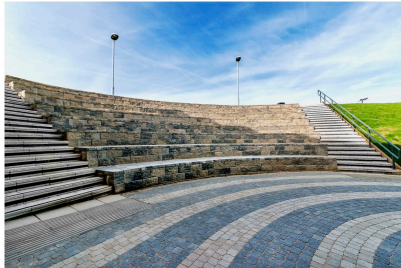


Santa Barbara, California



Esperance Waterfront, Western Australia by HASSELL

3 Amphitheatre - terraced seating, multipurpose events space, sheltered / partially covered



Denbigh School, Milton Keynes



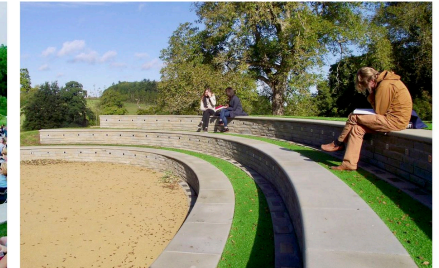
Jackson-Triggs Estate Amphitheatre, Niagara, Canada



Proposed Amphitheatre, Bath Spa University



Jackson-Triggs Estate Amphitheatre, Niagara, Canada



Bath Spa University Amphitheatre

18 'Splash Pad' for use all year round - warmed water, sheltered / partially covered, accessible



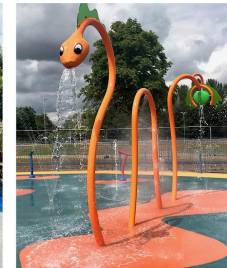
Drusillas Park, Alfriston, East Sussex



Victoria Park, Cardiff



Filmore Thomas Park, Macon, Georgia



Willen Lake, Milton Keynes



Victoria Park, Cardiff

19 Upgraded and extended Play Park - multi-age, multi-ability, all weather, sheltered / partially covered



Mission Dolores Park, San Francisco



Robertson Park, Renfrew, Paisley



Le Mee Sur Seine, France



Organic Robinia 'The Village'



Kompan Octa Net, Sky Cabin, Tunnel Slide



Kompan Organic Robinia Explorer Ship